

## RACK MOUNT SLIDE-OUT TYPE FIBER DISTRIBUTION ENCLOSURES

### Description

The rack mount slide-out type fiber optic distribution enclosures perform fiber splicing, distribution, termination, patching, storage and management in one unit. They support both cross-connect and interconnect architecture, and provide interfaces between outside plant cables and transmission equipment.

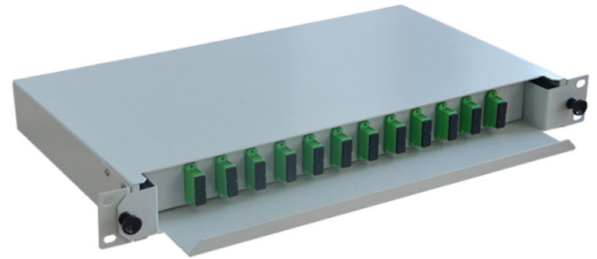


Fig. 1 Distribution enclosure

Each distribution enclosure incorporates a slide-out drawer to allow full frontal access and operation. The slide-out drawer has universal adapter plug-ins on the patch panel and has splice tray(s) behind the patch panel.

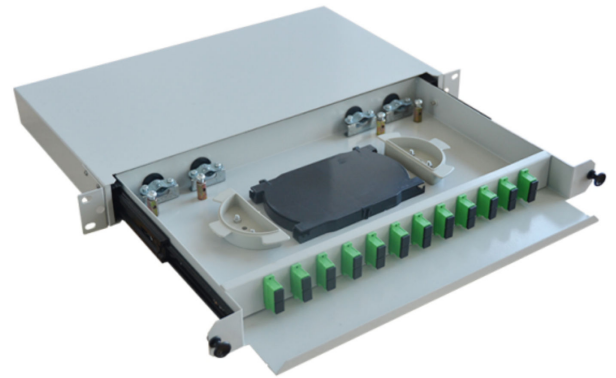


Fig. 2 Distribution enclosure with drawer slid out

Additional splice trays can be stacked on top to increase capacity. Each splice tray can accommodate up to 24 single fiber splice protection sleeves (with diameter of 2.3mm) or 6 ribbon splice protection sleeves. Splice trays can be opened individually and removed from the drawer. Excess length of cables/pigtails is stored in reels behind the patch panel.

The distribution enclosures employ fiber guide mechanism at specific points of the fiber patch providing fiber bend control. Horizontal cable guide is also incorporated at on the front of the patch panel of each distribution enclosure to allow the horizontal routing of patch cords. The horizontal cable guide is removable and position adjustable. The outside-plant cable input ports are located at the rear of the side panels.



Fig. 3 Splice trays

The fiber distribution enclosures are rack mountable in standard 19" or ETSI (515mm) equipment rack, and are available in Rack Units of 1 or 2.

## Features

- 19", ETSI or 23" rack mount
- Provides fiber splicing, termination, management and storage in one unit
- Easy frontal access
- High density - up to 48 fibers for a 1U unit and 96 fibers for a 2U unit when LC duplex is used
- Slide-out patch panel and splice tray drawer
- Each splice tray is removable for off-rack splicing
- Supports single and ribbon fiber splices
- Horizontal cable guide removable and position adjustable
- Made from cold-rolled carbon steel sheets
- Low cost

## Applications

- Interconnects
- Cross-connects
- Independent service providing
- CATV networks
- Main distributions
- Intermediate distributions
- Telephone closets

## Specifications

Distribution Enclosures				
Type		ODF-SB1	ODF-SB2	ODF-SB4
No. of Rack Units		1	2	4
Max Capacity*	Simplex	12 fibers	24 fibers	48 fibers
		Duplex	24 fibers	48 fibers
	Duplex LC & MTRJ	24 fibers	48 fibers	96 fibers
		48 fibers	96 fibers	192 fibers
Max. No. of Splice Trays		2	4	8
Weight		≤3.0kg	≤4.0kg	≤5kg
Dimension w/o brackets & cable guide* <sup>3</sup>		45x430x229 mm <sup>3</sup>	90x430x229 mm <sup>3</sup>	178x430x229 mm <sup>3</sup>
Dimension with 19" brackets, w/o cable guide* <sup>3</sup>		45x482x229 mm <sup>3</sup>	90x482x229 mm <sup>3</sup>	178x482x229 mm <sup>3</sup>
Dimension with 19" brackets & cable guide* <sup>3</sup>	Cable guide position 1	45x482x280 mm <sup>3</sup>	90x482x280 mm <sup>3</sup>	178x482x280 mm <sup>3</sup>
	Cable guide position 2	45x482x300 mm <sup>3</sup>	90x482x300 mm <sup>3</sup>	178x482x300 mm <sup>3</sup>

## Ordering Information

Part Number: **ODF-SB 2 FC R 48 S**

**1 2 3 4 5 6 7**

<b>1</b> Product Type	SB	Slide-out type fiber distribution enclosure,
	ST	Splice tray
<b>2</b> Size	1	1U
	2	2U
	4	4U
<b>3</b> Adapter Type	FC	FC/PC
	FA	FC/APC
	SC	SC/PC simplex
	SC2	SC/PC duplex
	SA	SC/APC simplex
	SA2	SC/APC duplex
	ST	ST/PC
	LC	LC/PC simplex
	LC2	LC/PC duplex
	E2	E2000/PC simplex
	MR	MTRJ
	DN	DIN/PC
	DNA	DIN/APC
	Blank	For splice tray, horizontal cable guide and mounting bracket.
<b>4</b> Adapter Grade	R	Single mode (SM)
	K	Multimode (MM)
<b>5</b> Number of Ports	12	Single fiber, 12 ports, loaded with adapters and 1 splice tray
	24	Single fiber, 24 ports, loaded with adapters and 2 splice trays
	36	Single fiber, 36 ports, loaded with adapters, and 3 splice trays for 2U box or 2 splice trays for 1U box*4
	48	Single fiber, 48 ports, loaded with adapters, and 4 splice trays for 2U box or 2 splice trays for 1U box*4
	72	Single fiber, 72 ports, loaded with adapters, and 6 splice trays for 4U box or 4 splice trays for 2U box*4
	96	Single fiber, 96 ports, loaded with adapters, and 8 splice trays for 4U box or 4 splice trays for 2U box*4
	144	Single fiber, 144 ports, loaded with adapters, and 8 splice trays*4
	192	Single fiber, 192 ports, loaded with adapters, and 8 splice trays*4
	12R	Ribbon fiber, 12 ports, loaded with adapters and 1 splice tray
	24R	Ribbon fiber, 24 ports, loaded with adapters and 1 splice tray
	36R	Ribbon fiber, 36 ports, loaded with adapters and 1 splice tray
	48R	Ribbon fiber, 48 ports, loaded with adapters and 2 splice trays
	72R	Ribbon fiber, 72 ports, loaded with adapters and 2 splice trays
	96R	Ribbon fiber, 96 ports, loaded with adapters and 3 splice trays
144R	Ribbon fiber, 144 ports, loaded with adapters and 4 splice trays	
192R	Ribbon fiber, 192 ports, loaded with adapters and 6 splice trays	

<b>6</b>	Bracket Type	S	For standard 19" rack
		E	For ETSI rack
		W	For 23" rack
<b>7</b>	Custom Code	Blank	Standard
		XXX	000, 001, 002, .....The code is defined upon request.

\*4 2.3mm diameter splice protection sleeves are used. 3mm diameter sleeves are used for others.

Part Number Examples	
Part Number	Description
ODF-SB1FCR12S	Distribution enclosure, 1U, 19" rack mount, 12 SM FC adapters loaded, for single fiber splicing.
ODF-SB1SA2R24E	Distribution enclosure, 1U, ETSI rack mount, 12 SM SC/APC duplex adapters loaded, for single fiber splicing.
ODF-SB1LC2K48S	Distribution enclosure, 1U, 19" rack mount, 24 MM LC duplex adapters loaded, for single fiber splicing.
ODF-SB2SC2R48S	Distribution enclosure, 2U, 19" rack mount, 24 SM SC duplex adapters loaded, for single fiber splicing.
ODF-SB2STK48W	Distribution enclosure, 2U, 23" rack mount, 48 MM ST adapters loaded, for single fiber splicing.
ODF-SB2MRK96S	Distribution enclosure, 2U, 19" rack mount, 48 MM MTRJ adapters loaded, for single fiber splicing.
ODF-SB4SCK72S	Distribution enclosure, 4U, 19" rack mount, 72 MM SC simplex adapters loaded, for single fiber splicing.
ODF-SB4FAR96S	Distribution enclosure, 4U, 19" rack mount, 96 SM FC/APC simplex adapters loaded, for single fiber splicing.
ODF-SB4LC2R144E	Distribution enclosure, 4U, ETSI rack mount, 72 SM LC duplex adapters loaded, for single fiber splicing.
ODF-SB2LC2R96RS	Distribution enclosure, 2U, 19" rack mount, 48 SM LC duplex adapters loaded, for ribbon fiber splicing.
ODF-SB4LC2R144RS	Distribution enclosure, 4U, 19" rack mount, 72 SM LC duplex adapters loaded, for ribbon fiber splicing.
ODF-ST12	Splice tray for single fiber splice, 12 splice protection sleeves included.
ODF-ST24	Splice tray for single fiber splice, 24 splice protection sleeves included.
ODF-ST48R	Splice tray for ribbon fiber splice, 4 splice protection sleeves included.
ODF-ST72R	Splice tray for ribbon fiber splice, 6 splice protection sleeves included.